

AQUATERA ECO CENTRE

Aquatera operates the Eco Centre, Grande Prairie's largest residential recycling depot. As well as accepting blue bag recycling, this facility accepts electronics, batteries, household hazardous waste, and much more! The Eco Centre features designated bins and spaces for items to be disposed. As these items are bulked in Grande Prairie and sent to different facilities for processing without a Materials Recovery Facility (MRF), they are required to be separated. All disposal bins and spaces are labelled so customers can easily determine where to discard their items, and team members are on site to help answer any recycling questions. For more information, visit www.aquatera.ca/services/garbage-and-recycling/eco-centre.

CONTAMINATES

Whether you are recycling in your blue bag or at the Eco Centre, you should be sure that all recyclables are free of contaminants including food, grease, and garbage. When an item is contaminated, it is no longer recyclable and if it encounters other items, those items will no longer be recyclable either and will be diverted to the Landfill.

WHERE DOES MY WASTE GO?

Unsure of how to properly dispose of your waste? Use our 'Where Does My Waste Go?' tool and we'll tell you where it goes. For more information visit www.aquatera.ca/services/wheredoesmywaste.

RISKY RECYCLING

Some items can be dangerous if they are not disposed of correctly and can be harmful to people and our environment.

Batteries

Improper disposal can be dangerous to waste disposal workers and the environment. Properly dispose of your batteries at the Eco Centre and Landfill.



Bullets and Ammunition

Improper bullet and ammunition disposal can be dangerous to workers and have a negative effect on the environment. Please dispose of your bullets and ammunition responsibly at the RCMP detachment located at 10202 99 Street, Grande Prairie.

Note: Please keep bullets and ammunition secured in your vehicle and notify front counter staff. They will arrange to collect these items from your vehicle safely.

Household Hazardous Waste

To protect human and environmental health and safety, the Eco Centre is in alignment with Alberta Environment and Protected Areas guidelines around household hazardous waste.

- Products must be properly sealed in their original containers with intact labels.
- If products are not in their original containers, customers must ensure the chemicals are safely and securely sealed, properly labelled, and not mixed with other chemicals.

The Eco Centre is continuously improving its site operations to ensure that customers can easily understand and identify proper disposal instructions for household hazardous waste. Disposal zones are clearly identified with signage to indicate how and where to properly dispose of waste.

Propane Tanks

Propane tanks can be extremely dangerous to workers and the environment if they are not disposed of properly. Bring your propane tanks to the Eco Centre or the Landfill and they will be safely recycled.



www.aquatera.ca

Find us on:



AQUATERA LANDFILL

Aquatera's Landfill is Grande Prairie's waste disposal facility serving both residential and commercial customers. We offer a variety of disposal options including household and commercial waste, and recycling.

Did you know that the Aquatera Landfill:

- Is one out of five Alberta landfills collecting methane for gas to energy.
- Operates a drone for current compaction rates and site surveys.
- Operates a waste shredder to improve waste compaction.

For more information visit

www.aquatera.ca/services/garbage-and-recycling/landfill.

OUR COMMITMENT TO THE ENVIRONMENT AND OUR CUSTOMERS



GREENHOUSE GASES

Significantly reduces Greenhouse Gas (GHC) while improving air quality.



Emissions are reduced by approximately 63,000 tonnes annually, equivalent to removing 13,500 vehicles from the road each year.



Revenue from carbon credits, combined with generating our own heat and power, helps stabilize rates for our customers.

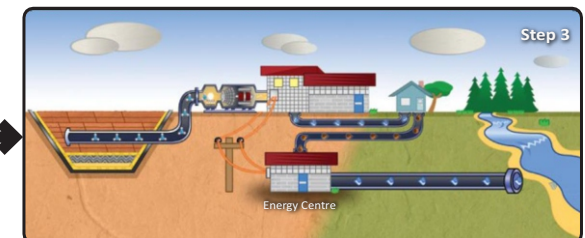
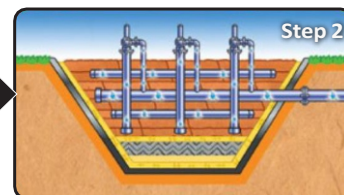
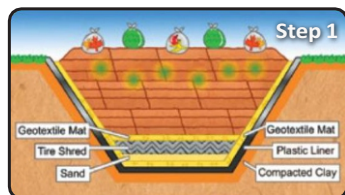
Through the use of leading-edge technology, Aquatera's Landfill is able to capture naturally occurring methane gas from decomposing waste and convert it into gas to heat and power the adjacent water and wastewater treatment plants.

HOW DOES IT WORK?

The process begins with your waste, including organics such as food and yard waste. Garbage collected in our landfill is compacted in layers in engineered landfill cells.

Organic waste decomposes very quickly, breaking down at a faster rate than other waste. Because organics quickly decompose, they not only produce more landfill gas, but free up space in the landfill for more waste. Fluid called leachate, which is collected in our Bioreactor, is re-circulated along with other fluids into the waste to enhance decomposition. Traditionally, landfill gas emitted from decomposing waste escapes into the atmosphere. However, at Aquatera's Bioreactor Landfill, this gas is collected through pipes in the cells. The mix of organic waste and garbage with bioreactor technology accelerates decomposition, increasing the overall lifespan of the landfill. Speeding up the decomposition process also accelerates landfill gas production.

Gas captured is pumped to a generating station. There, all water is removed, and the gas, primarily methane, is burned. When methane gas is burned, it powers an engine that turns generators to make heat and electricity. Our water and wastewater treatment plants uses our own green energy to continue to produce high-quality water and high-quality treated wastewater for return to the Wapiti River.



BIOREACTOR LANDFILL GAS-TO-ENERGY

The gas-to-energy project at the Landfill captures methane gas from waste and converts it into a fuel source!

MAJOR SYSTEM COMPONENTS



Landfill gas well field and collection system upgrades at the Aquatera landfill.



Landfill gas cleaning and compression system.



Landfill gas transmission from the compression system to the Water and Wastewater Treatment Plants.



Replacement of back-up generators with two dual landfill gas and natural gas generators.

